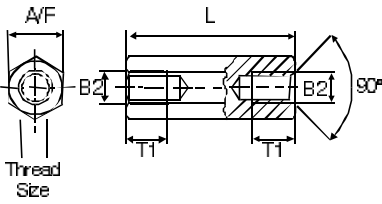


◆ Series II/IA - ST Hexagonal Spacers - Steel

Series 11- Tapped Both Ends



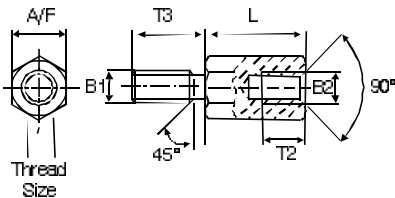
Tapped Depth - to Din 76-B

Thread	A/f up to L =	Tapped thro'	Min tap depth
M3	5.5	20.0	7.0
M3	6.0	20.0	7.0
M4	7.0	20.0	9.0
M5	8.0	20.0	11.0
M6	10.0	20.0	11.0
M8	13.0	35.0	16.0



STEEL • STEEL • STEEL • STEEL • STEEL • STEEL • STEEL • STEEL • STEEL • STEEL • STEEL • STEEL • STEEL • STEEL • STEEL •			
Thread	A/f	Order code	Available Standard Lengths**
M3	5.5	II-ST-3055-XX*	05 06 07 08 09 10 11 12 13 14 15 16 17 18 19 20 21 22 23 24 25 26 27 28 29 30 31 32 33 34 35 36 37 38 39 40 45 50 55 60 65 70
M3	6.0	II-ST-3060-XX*	05 06 07 08 09 10 11 12 13 14 15 16 17 18 19 20 21 22 23 24 25 30 35 40 42 45 50 55 60 65 70 75 80 85 90 95 100
M4	7.0	II-ST-4070-XX*	05 06 07 08 09 10 11 12 13 14 15 16 17 18 19 20 21 22 23 24 25 26 27 28 29 30 31 32 33 34 35 36 37 38 39 40 41 42 43 44 45 50 55 60 65 70 75 80 85 90 95 100
M4	8.0	II-ST-4080-XX*	05 06 07 08 09 10 11 12 13 14 15 16 17 18 19 20 21 22 23 24 25 26 27 28 29 30 31 32 33 34 35 36 37 38 39 40 42 45 46 48 50 52 55 60 65 70 75 80 85 90 95 100
M5	8.0	II-ST-5080-XX*	08 10 12 13 14 15 16 17 18 20 22 23 24 25 26 27 28 29 30 35 40 45 50 53 55 60 65 70 75 80 85 90 95 100
M5	10.0	II-ST-5010-XX*	10 12 15 20 22 25 30 35 40 45 50 60
M6	10.0	II-ST-6010-XX*	08 10 12 14 15 16 18 20 25 30 35 40 45 50 55 60 65 70 75 80 85 90 95 100
M8	13.0	II-ST-8013-XX*	15 20 25 30 35 40 45 50 60 70 80 90 100

Series IA-Threaded Stud / Tapped Hole



Tapped Depth - to Din 76-B

M	A/f	T3	T2
M3	5.5	6.0	7.0
M4	7.0	8.0	9.0
M4	8.0	8.0	9.0
M5	8.0	10 (8)	11.0
M5	10.0	10.0	11.0
M6	10.0	12.0 (10.0)	14.0 (10.0)
M8	13.0	14.0	16.0



STEEL • STEEL • STEEL • STEEL • STEEL • STEEL • STEEL • STEEL • STEEL • STEEL • STEEL • STEEL • STEEL • STEEL • STEEL •			
Thread	A/f	Order Code	Available Standard Lengths**
M3	5.5	IA-ST-3055-XX*	05 06 07 08 09 10 11 12 13 14 15 16 17 18 19 20 21 22 23 24 25 26 27 28 29 30 31 32 33 34 35 36 37 38 39 40 45 50 55 60 65 70 80
M3	6.0	IA-ST-3060-XX*	05 06 07 08 09 10 11 12 13 14 15 16 17 18 19 20 21 22 23 24 25 26 27 28 29 30 31 32 33 34 35 40 45 48 50 55 60 65 70 75 80 85 90 95 100
M4	7.0	IA-ST-4070-XX*	05 06 07 08 09 10 11 12 13 14 15 16 17 18 19 20 21 22 23 24 25 26 27 28 29 30 31 32 33 34 35 36 37 38 39 40 41 42 43 44 45 50 55 60 65 70 75 80 85 90 95 100
M4	8.0	IA-ST-4080-XX*	05 06 07 08 09 10 11 12 13 14 15 16 17 18 19 20 21 22 23 24 25 26 27 28 29 30 31 32 33 34 35 36 37 38 39 40 41 42 43 44 45 46 47 48 50 55 60 65 70 75 80 85 90 95 100
M5	8.0	IA-ST-5080-XX*	07 08 10 12 14 15 16 17 18 19 20 21 22 23 24 25 26 27 28 29 30 35 40 45 50 55 60 65 70 75 80 85 90 95 100
M5	10.0	IA-ST-5010-XX*	15 20 25 30 35 40 45 50
M6	10.0	IA-ST-6010-XX*	10 12 14 15 16 18 20 25 30 35 40 45 50 55 60 65 70 75 80 85 90 95 100 120
M8	13.0	IA-ST-8013-XX*	15 20 25 30 35 40 45 50 55 60 65 70 75 80 85 90 95 100

Notes: * Complete order code by adding body length suffix.

** Any custom lengths to order - please check with the sales office for intermediate sizes already run but not listed.

Material: Steel to Din 176 9S Mn Pb 28K

Plating: Zinc (A3F) to Din 267